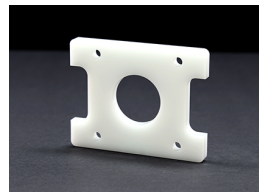




## Tissue Container

Catalog #: C12001  
Quantity : 20 units  
Holds one adult mouse brain



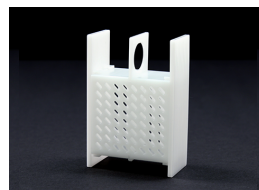
## Container Holder for 1 Tissue Container

Catalog #: C12002  
Quantity : 1 unit  
Holds one tissue container



## Mouse Brain Slice Holder

Catalog #: C12004  
Quantity : 1 unit  
Holds up to three mouse brain slices



## Whole Rat Brain Holder

Catalog #: C12007  
Quantity : 1 unit  
Holds one adult rat brain or two adult mouse brains



## Holder for 36 Mouse Brain Slices

Catalog #: C12010 - 1.5  $\Phi$   
Catalog #: C12020 - 0.6  $\Phi$

- 7 1.5  $\Phi$  or 0.6  $\Phi$  Mesh Plates
- 6 Spacers for 6 Slices
- 3 silicone rings

Well size: 16.8 x 16.8 x 2 mm  
Sample: 36 mouse brain slices

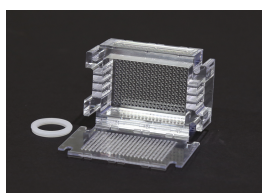


## Holder for 6 Slices

Catalog #: C12011 - 1.5  $\Phi$   
Catalog #: C12021 - 0.6  $\Phi$

- 7 1.5  $\Phi$  or 0.6  $\Phi$  Mesh Plates
- 6 Spacers for 1 Slice
- 3 silicone rings

Well size: 35 x 53 x 2 mm  
Sample: 6 slices

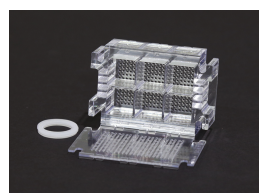


## Holder for 1 Sample

Catalog #: C12012 - 1.5  $\Phi$   
Catalog #: C12022 - 0.6  $\Phi$

- 7 1.5  $\Phi$  or 0.6  $\Phi$  Mesh Plates
- 6 Spacers for 6 Slices
- 3 silicone rings

Well size: 35 x 53 x 20 mm  
Sample: 1 sample



## Holder for 6 Mouse Brains

Catalog #: C12013 - 1.5  $\Phi$   
Catalog #: C12023 - 0.6  $\Phi$

- 2 1.5  $\Phi$  or 0.6  $\Phi$  Mesh Plates
- 1 Spacer for 6 Mouse Brains
- 3 silicone rings

Well size: 16.8 x 16.8 x 20 mm  
Sample: 6 adult mouse brains



## Holder for 48 Samples

Catalog #: C12014 - 1.5  $\Phi$   
Catalog #: C12024 - 0.6  $\Phi$

- 3 1.5  $\Phi$  or 0.6  $\Phi$  Mesh Plates
- 2 Spacers for 24 Samples
- 3 silicone rings

Well size: 6.5 x 6.5 x 10 mm  
Sample: 48 samples



## Holder for 192 Samples

Catalog #: C12015 - 1.5  $\Phi$   
Catalog #: C12025 - 0.6  $\Phi$

- 3 1.5  $\Phi$  or 0.6  $\Phi$  Mesh Plates
- 2 Spacers for 96 Samples
- 3 silicone rings

Well size: 3 x 3 x 10 mm  
Sample: 192 samples