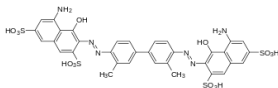


Trypan Blue Stain, 0.4%

T13001



Storage

Room temperature

Product Description

| | |
|-------------------|---|
| Molecular formula | C ₃₄ H ₂₈ N ₆ O ₁₄ S ₄ |
| Molecular weight | 872.88 g/mol |
| Appearance | Dark blue liquid |
| Cell permeability | Membrane impermeant |

Trypan Blue Stain is a vital dye used to assess cell viability. Viable cells have intact cell membranes and are not stained, remaining colorless. Nonviable cells are stained blue. Trypan Blue Stain is used with the LUNA™ family of cell counters for brightfield cell counting.

Directions for Use

1. Mix:
 - 10 µL Trypan Blue Stain, 0.4%
 - 10 µL cell sample
2. Count the sample with a compatible LUNA™.

Disclaimer

This product is for research use only. Please consult the material safety data sheet for information regarding hazards and safe handling practices.

Additional information is available on our website at www.logosbio.com. © Logos Biosystems 2018. All rights reserved.



HEADQUARTERS

FL 3
28 Simindaero 327beon-gil, Dongan-gu
Anyang-si, Gyeonggi-do 14055
South Korea

Tel: +82 (31) 478-4185

USA

7700 Little River Turnpike STE 207
Annandale, VA 22003
USA

Tel: +1 (703) 622-4660, +1 (703) 942-8867

EUROPE

1 allée Lavoisier 59650 Villeneuve d'Ascq
France

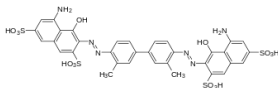
Tel: +33 (0)3 74 09 44 35

www.logosbio.com

LBSM-RD-PI-TB-001 Rev.2

Trypan Blue Stain, 0.4%

T13001



Storage

Room temperature

Product Description

| | |
|-------------------|---|
| Molecular formula | C ₃₄ H ₂₈ N ₆ O ₁₄ S ₄ |
| Molecular weight | 872.88 g/mol |
| Appearance | Dark blue liquid |
| Cell permeability | Membrane impermeant |

Trypan Blue Stain is a vital dye used to assess cell viability. Viable cells have intact cell membranes and are not stained, remaining colorless. Nonviable cells are stained blue. Trypan Blue Stain is used with the LUNA™ family of cell counters for brightfield cell counting.

Directions for Use

1. Mix:
 - 10 µL Trypan Blue Stain, 0.4%
 - 10 µL cell sample
2. Count the sample with a compatible LUNA™.

Disclaimer

This product is for research use only. Please consult the material safety data sheet for information regarding hazards and safe handling practices.

Additional information is available on our website at www.logosbio.com. © Logos Biosystems 2018. All rights reserved.



HEADQUARTERS

FL 3
28 Simindaero 327beon-gil, Dongan-gu
Anyang-si, Gyeonggi-do 14055
South Korea

Tel: +82 (31) 478-4185

USA

7700 Little River Turnpike STE 207
Annandale, VA 22003
USA

Tel: +1 (703) 622-4660, +1 (703) 942-8867

EUROPE

1 allée Lavoisier 59650 Villeneuve d'Ascq
France

Tel: +33 (0)3 74 09 44 35

www.logosbio.com

LBSM-RD-PI-TB-001 Rev.2