

LUNA-FX7™

Software Update manual v1.1

IMPORTANT

- Do not put multiple software files on the USB drive at once.
- Save only one software file to use then update.
- From version 1.6.1, -Basic, -IQOQ, -BIO, -FULL version are all integrated into one software and will automatically function as that version depending on the product key.
- If the current software is less than 1.3.0, be sure to refer to the [last page\(p.8\)](#).

WARNING

- Because software update is potentially risky, if you do not encounter problems using the current version of software, it is recommended that you not update the software. To flash the software, do it with caution. Inadequate software update may result in system malfunction. Be sure to read the Release Notes before updating the software.

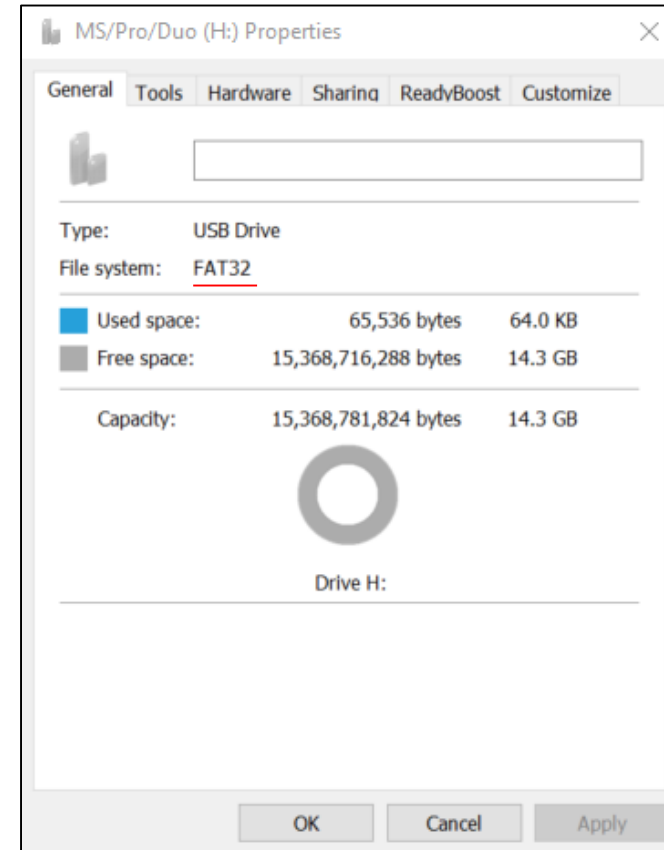
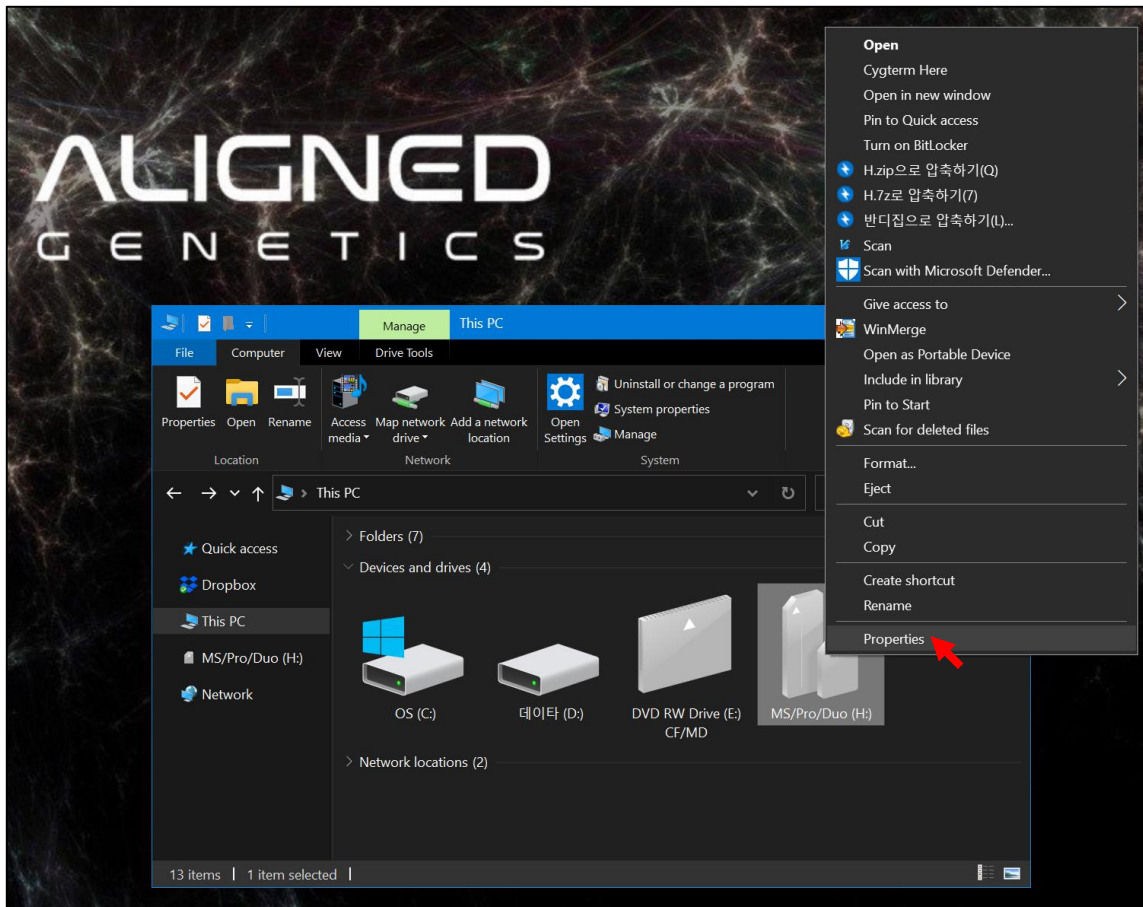
#1. For software not available on website, contact techsupport@alignedgenetics.com

LUNA-FX7™ Software Update manual

❖ Prepare a USB memory in FAT32 format

● How to check

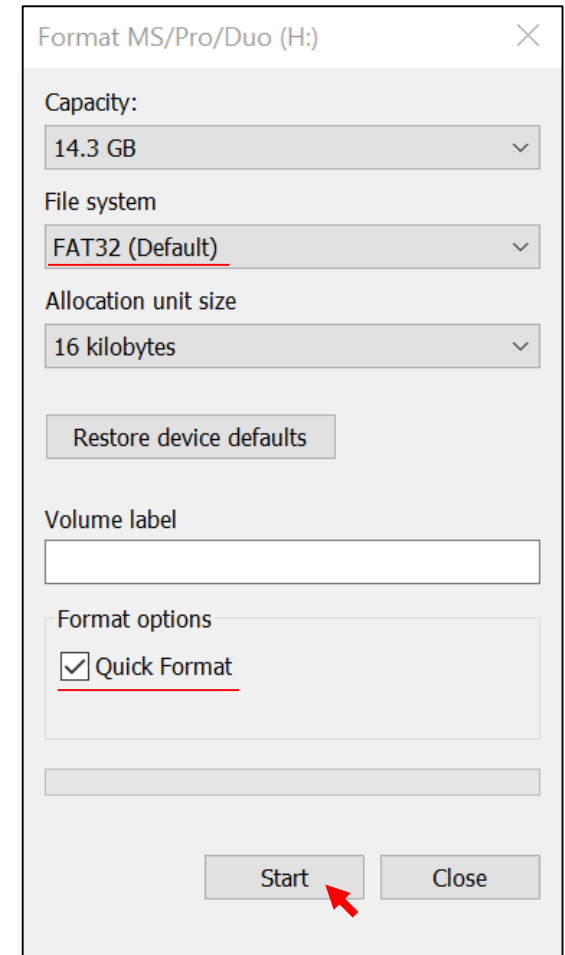
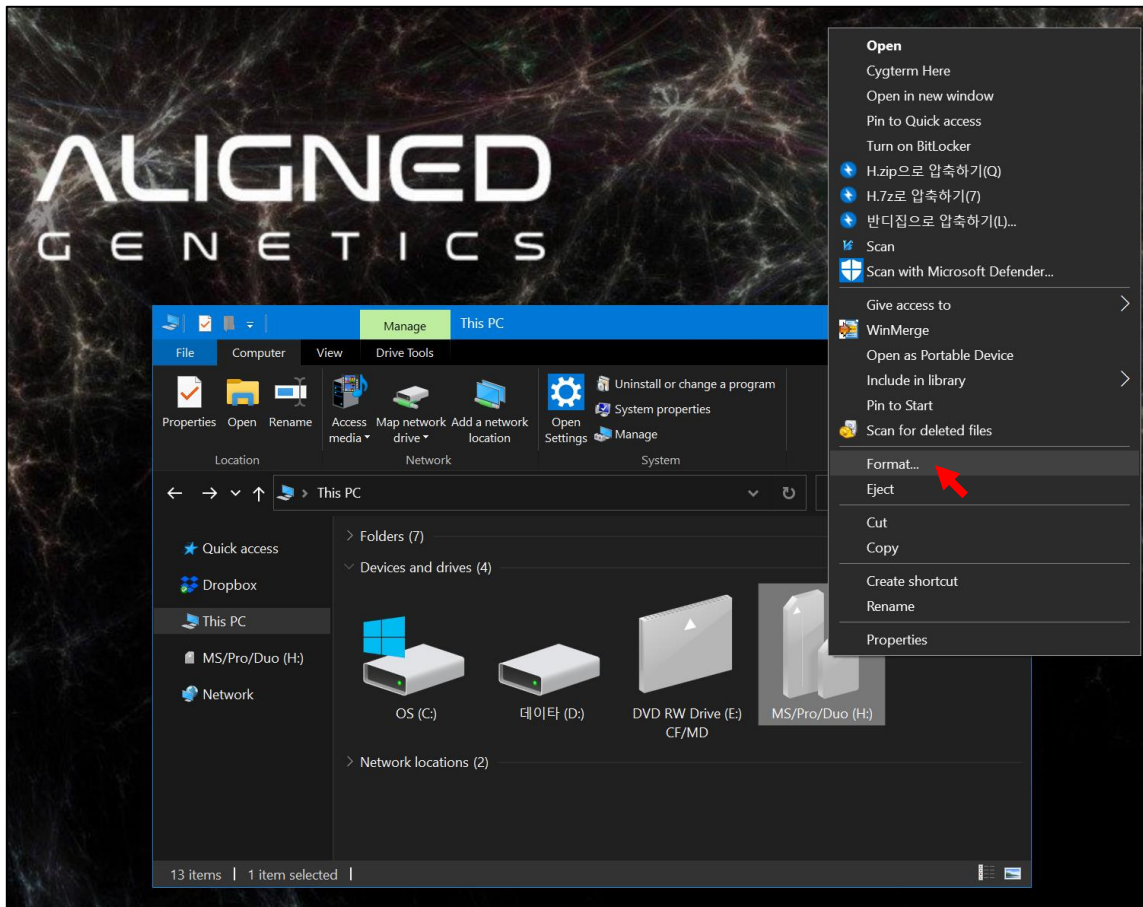
If "USB – Properties – File System: FAT32", go to page 4.
else, go to page 3.



❖ Prepare a USB memory in FAT32 format

● Format Method

Set the File system to FAT32, Enable Quick Format, and Click the Start button.



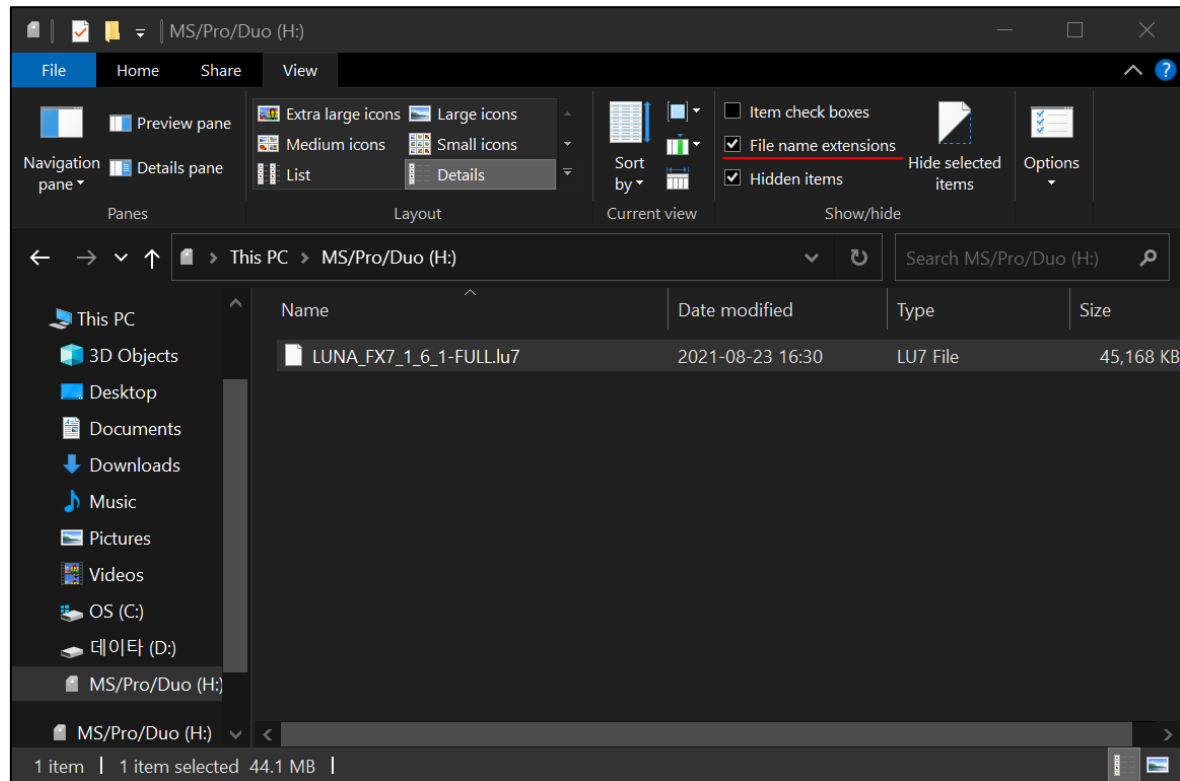
LUNA-FX7™ Software Update manual

❖ Save Firmware to USB Drive

- Save the software file to the USB root director.
- File name and extensions must match up to case. (You can check it by enabling the file name extension)
- File name and extensions form: **LUNA_FX7_0_0_0-FULL.lu7**

IMPORTANT

- Do not arbitrarily modify the file name.



- ❖ Insert the USB Drive into the USB port

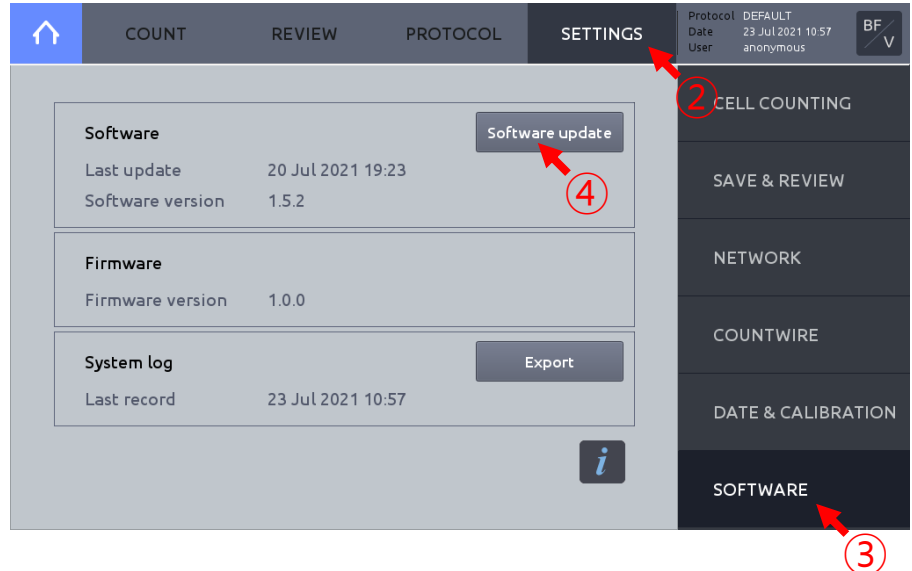
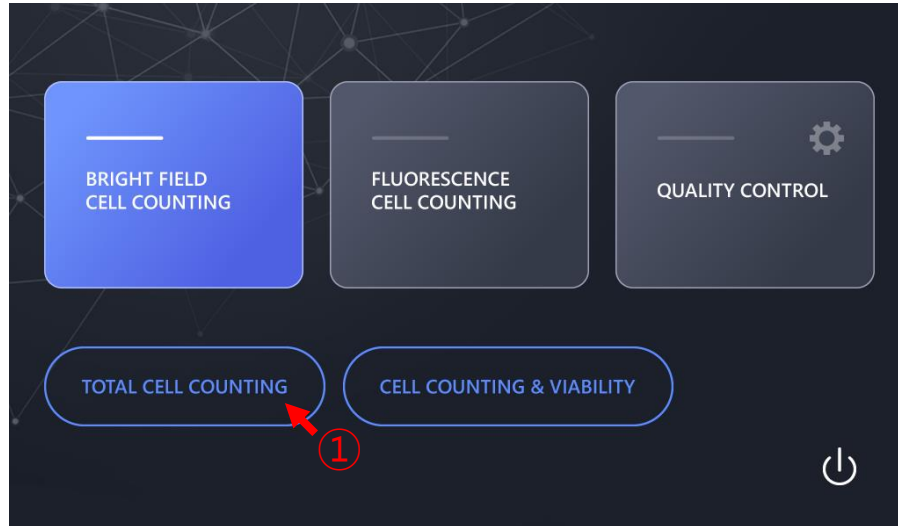


LUNA-FX7™ Software Update manual

- ❖ Turn on LUNA-FX7, and go into any mode and enter the settings – software menu and press the Software update button to start the update

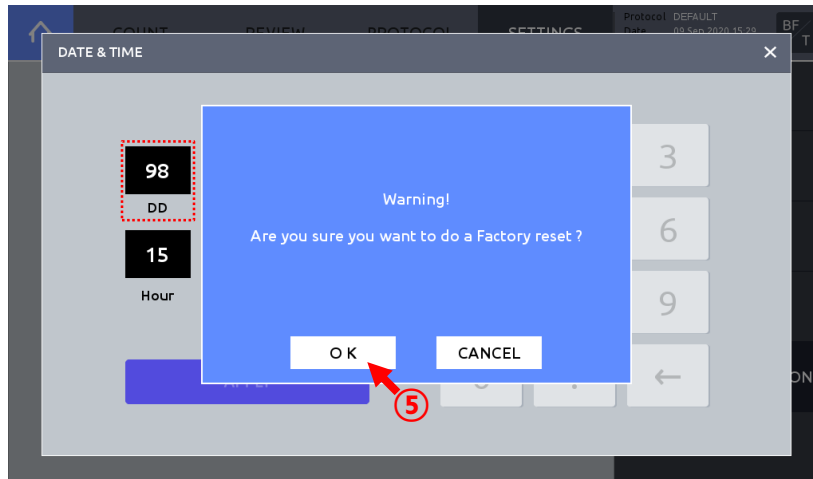
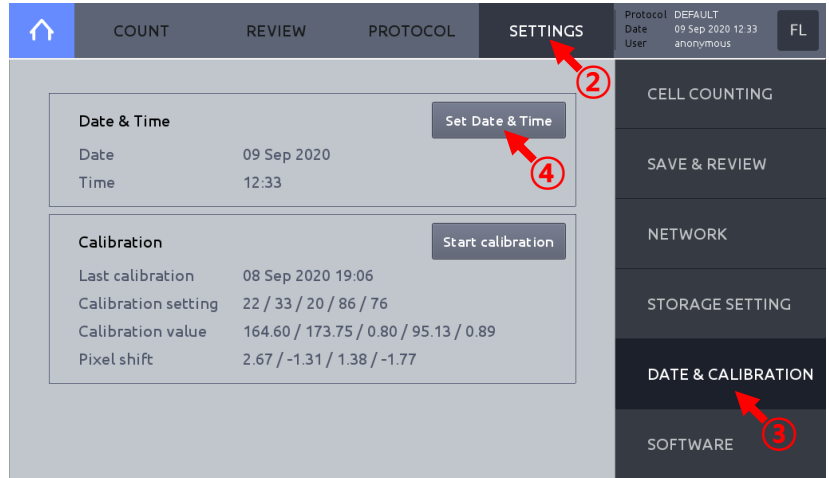
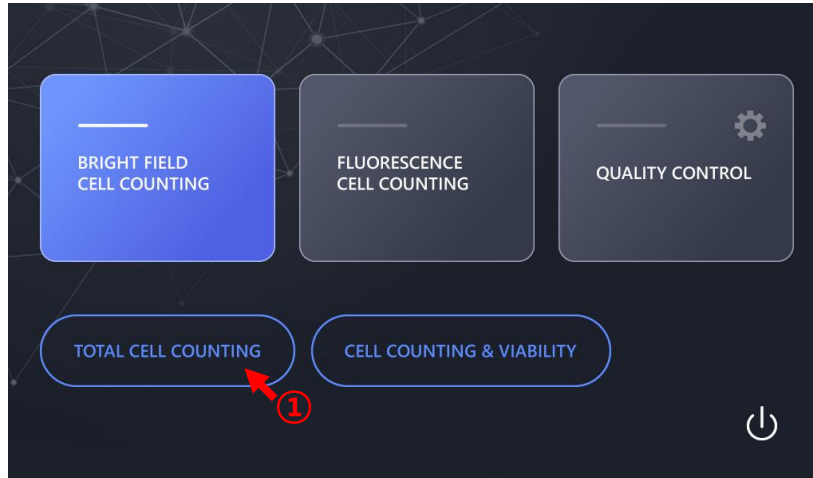
IMPORTANT

- Older versions may have slightly different UI.



LUNA-FX7™ Software Update manual

- ❖ The format of the data file has been changed since software 1.3.0.
Therefore, if the current software is less than 1.3.0, factory reset must be performed before updating.
(If you don't do that, the device may not operate normally)



①~③
**BRIGHT FIELD CELL COUNTING > TOTAL CELL COUNTING
> SETTINGS > DATE & CALIBRATION**

④~⑤
Set Date & Time > Change DD to 98 > APPLY > Click OK

[! Caution] The factory reset erases all stored data. Back up the previous data (saved project, previous count data, bioprocess data) before the factory reset.