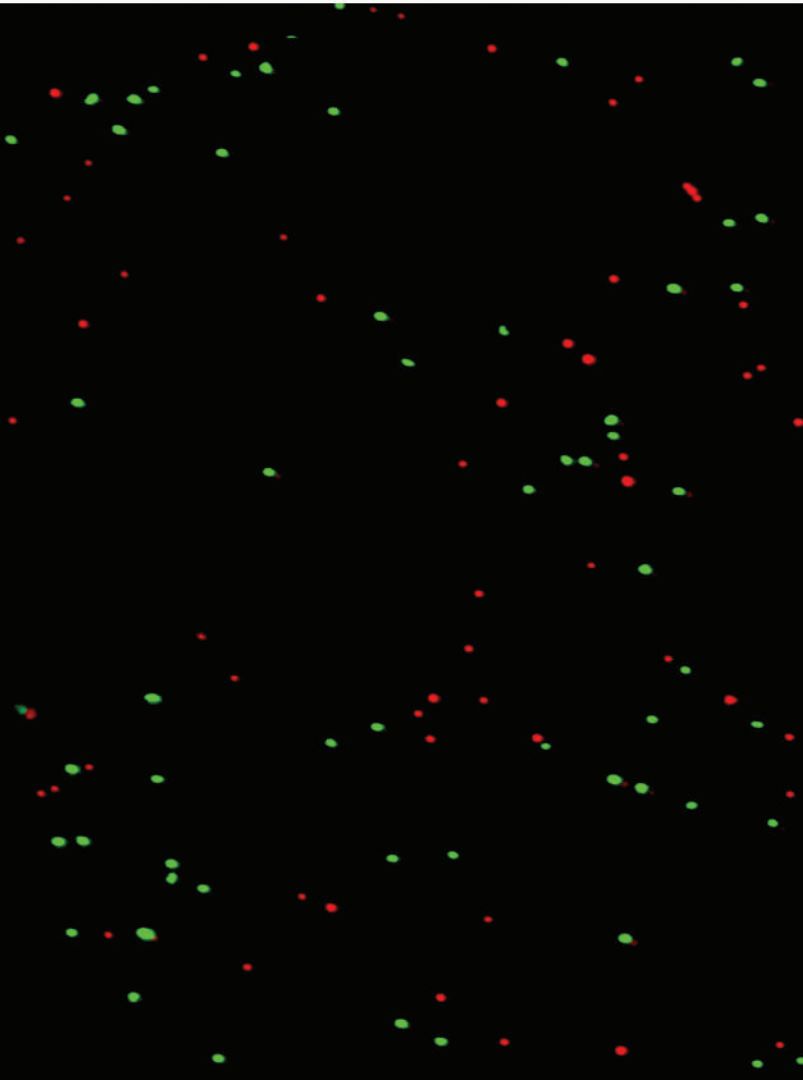


The LUNA-FL™ is a fluorescence cell counter that measures cell viability and counts cells.

The most advanced integrated fluorescent optics sets the LUNA-FL™ apart from other cell counters by providing unparalleled counting speed and accuracy of any cell type.

Accelerate your research with the ultimate automated cell counter, the LUNA-FL™.



**Luna** *fl*™

The Ultimate Automated Cell Counter

# The Ultimate Automated Cell Counter



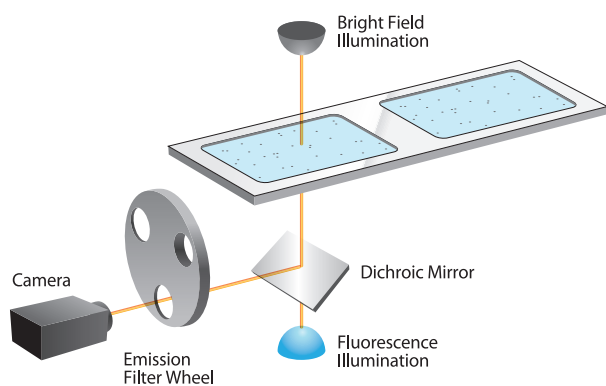
The LUNA-FL™ automated cell counter is a stand-alone compact instrument with combined fluorescence microscopy and image analysis software. Its interactive touchscreen interface makes accurate cell counting simple.

# Luna *fl*™

## Dual Fluorescence Cell Counting

The LUNA-FL™ automated cell counter from Logos Biosystems is a quantum leap for automated cell counting and cell viability analysis. The LUNA-FL™ automated cell counter gives you sensitive and accurate live/dead cell counting results without limitation of cell types.

Unlike immortalized cell lines, primary cells such as PBMCs, splenocytes, neutrophils, and stem cells have been difficult to count with conventional cell counters such as Coulter counter or image-based automated cell counters that utilize bright field optics. Primary cells are often contaminated with undesirable debris, which can be confused for cells with conventional cell counters. The LUNA-FL™ is integrated with dual fluorescence microscope optics to overcome this problem. Live/dead cells are stained with the green/red fluorescence dye, and labeled cell images are analyzed with accurate image analysis software.



## Key Features

Dual Fluorescence Optics  
For Sensitive Cell Analysis

Unmatched Cell Counting  
Accuracy

Most Affordable Counting  
Cost & Cell Size Gating

Trypan Blue Stained Cell Counting  
with Bright Field Optics

Optimized for Primary Cells, Stem  
Cells, PBMCs, Splenocytes, etc.

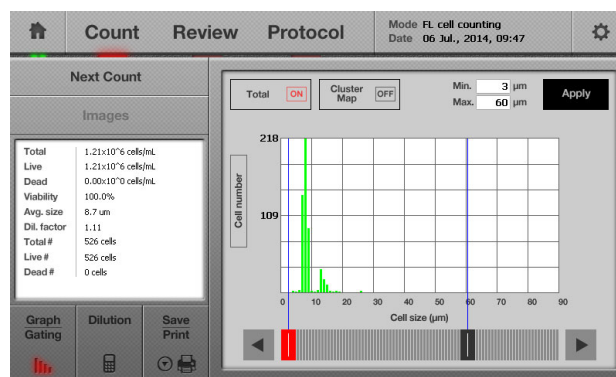
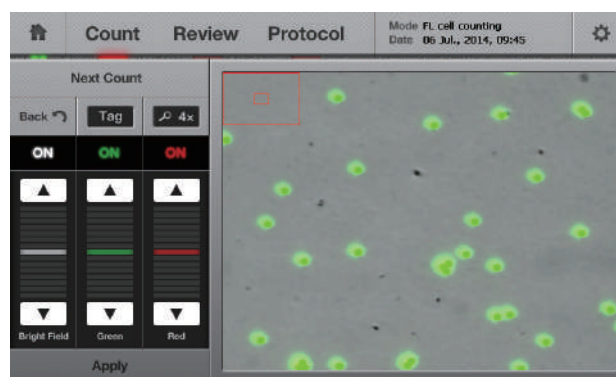
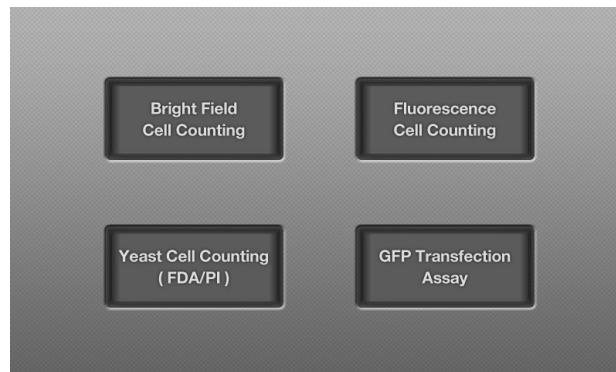
Interactive  
Graphic User Interface

## Smarter than Ever

### Don't always need fluorescence ? Bright field optics is incorporated for dye exclusion based cell counting

LUNA-FL™ also inherited the proven performance of the LUNA™ automated cell counter. The precision bright field microscope optics of the Luna™ is integrated in the LUNA-FL™ to provide the convenient features of trypan blue stained cell counting. The powerful and accurate cell counting algorithm of the LUNA™ is still available with the LUNA-FL™.

LUNA-FL™ = LUNA™ + dual fluorescence



## Interactive Software Interface

### Powerful On-board Analysis

After the cell counting operation is performed, integrated analysis software gives immediate viability data which is reported on the LUNA-FL™. For validation purposes, living cells are conveniently circled in green and dead cells in red.

### Image Overlay

The analyzed images from each channel (bright field, green, and red channel) can be merged directly on the screen. The brightness of each color can be adjusted independently for the accurate monitoring.

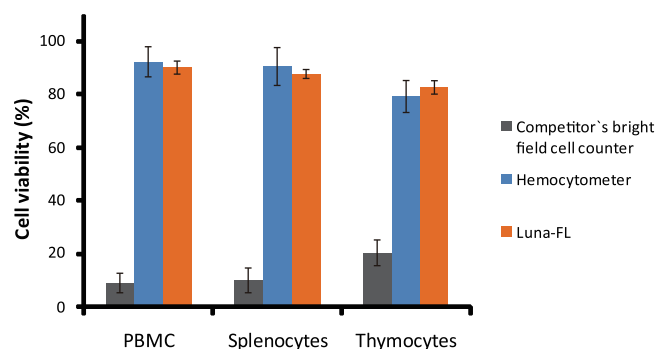
Images can then be saved to the USB drive for storage, transfer, or future analysis.

### Cell Size Gating

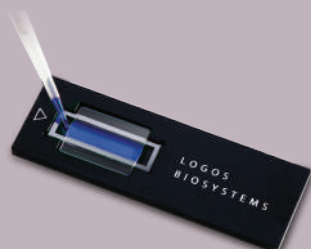
Counted cells can be gated based on the cell size information. Using a histogram to display live and dead cell populations, particles can be easily excluded or included by simply defining the cell size to include in the count data.

### Data Report

The analyzed data can be easily saved as a PDF report or CSV file. Cell counting results, cell image data, and a various types of histograms are integrated into a single PDF file and transferred via a USB drive. Data from previous cell counts (up to 1,000 counts) are archived on the LUNA-FL™.

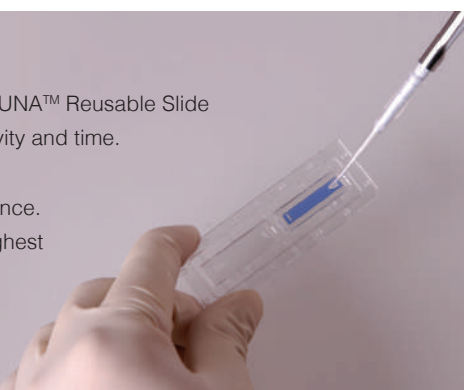


## The lowest counting costs



**Cost efficient:** Designed for cost-efficient and accurate cell counting, the LUNA™ Reusable Slide has the affordability of manual cell counting without the associated subjectivity and time.

**Convenient:** LUNA™ Cell Counting Slide offer the ultimate counting experience. With no mess or cleanup, these disposable precision slides maintain the highest standard of cell counting accuracy.



## Specifications

Sample Volume	10 $\mu$ l
Cell Counting Time	30 sec
Cell Concentration Range	$5 \times 10^4$ - $1 \times 10^7$ cells/mL
Cell Size Range	Detectable Range: 1 - 90 $\mu$ m Optimal Range: 5 - 60 $\mu$ m
Excitation wavelength	470 $\pm$ 20 nm
Emission wavelength	530 $\pm$ 25 nm, 600 nm (LP)
Light Source	LED
Image Resolution	5 MP
LCD Display	800 x 480 pixels
Dimensions (WxDxH)	22 x 21 x 9 cm (8.6 x 8.3 x 3.5 in)
Weight	1.8 kg (4 lb) *without the AC adapter and power cord

## Cell Lines Validated

On The LUNA-FL™ Automated Cell Counter

Cell Type	Vendor	Animal	Organ
PBMC	Primary Cell	Mouse	Blood
Splenocyte	Primary Cell	Mouse	Spleen
Thymocyte	Primary Cell	Mouse	Thymus
A431	ATCC	Human	Skin
CHO-M1WT2	ATCC	Chinese Hamster	Ovary
CHSE	ATCC	Chinook Salmon	Embryo
COLO-205	ATCC	Human	Colon
COS-7	ATCC	African Monkey	Kidney
HEK-293	ATCC	Human	Kidney
HeLa	ATCC	Human	Cervix
HepG2	ATCC	Human	Liver
HL-60	ATCC	Human	Blood
J774A.1	ATCC	Mouse	Blood
Jurkat	ATCC	Human	Blood
MCF7	ATCC	Human	Breast
MRC-5	ATCC	Human	Lung
NIH/3T3	ATCC	Mouse	Embryo

## Ordering Information

Cat#	Product	Size
L20001	LUNA-FL™ Automated Fluorescence Cell Counter	1 unit
L12001	LUNA™ Cell Counting Slides, 50 Slides	1 box
L12002	LUNA™ Cell Counting Slides, 500 Slides	10 boxes
L12003	LUNA™ Cell Counting Slides, 1,000 Slides	20 boxes
L12011	LUNA™ Reusable Slide	1 unit
L12012	LUNA™ Reusable Slides	2 unit
L12014	LUNA™ Reusable Slide Coverslips	10 unit
L12005	PhotonSlide™, 50 slides	1 box
L12006	PhotonSlide™, 500 slides	10 boxes
L12007	PhotonSlide™, 1,000 slides	20 boxes
T13001	Trypan Blue Stain, 0.4%	2 x 1 mL
T13002	Erythrosin B Stain	2 x 1 mL
F23001	Acridine Orange / Propidium Iodide Stain	2 x 0.5 mL
F23002	Acridine Orange Stain	2 x 0.5 mL
F23003	Propidium Iodide Stain	2 x 0.5 mL
F23202	Yeast Viability Kit 1	1 kit
F23004	Propidium Iodide Stain for Yeast	2 x 0.5 mL
F23211	Fluorescein Diacetate Stain	2 x 0.5 mL
F23212	Cell Dilution Buffer	5 x 20 mL
F23213	Fluorescein Signal Enhancer 1	2 x 0.5 mL
P10001	LUNA™ Printer I	1 unit
P10002	LUNA™ Printer I Paper (Thermal, 275 prints/roll, 6 rolls)	3 x 2 rolls
P13001	LUNA™ Printer Cleaning Pen	1 unit
U10005	USB Drive, 16 GB	1 unit



www.logosbio.com

LBSM-RD-BR-LUF-001

### HEADQUARTERS

18, Gosan-ro 148beon-gil,  
Gunpo-si, Gyeonggi-do, 15850  
Republic of Korea

Tel : +82-31-478-4185  
Fax : +82-31-478-4277  
E-mail : info@logosbio.com

### USA

9990 Fairfax Blvd, Suite 100 Fairfax,  
VA 22030  
USA

Tel : +1 (703) 622-4660, +1 (703) 942-8867  
Fax : +1 (571) 266-3925  
E-mail : info-usa@logosbio.com

### EUROPE

1 allée Lavoisier  
59650 Villeneuve d'Ascq  
France

Tel : +33 (0)3 74 09 44 35  
Fax : +33 (0)3 59 35 01 98  
E-mail : info-france@logosbio.com