

CountWire™

Version Release Note: 1.3.0

CountWire



May. 17, 2023

Sales & Marketing Department

< Version 1.3.0 >

Release Date	Model	Version	Writer
May. 17, 2023	CountWire™	1.3.0	Yubeen & Yuri

Hardware	Software	New features	Improvement
-	0	0	0

Version description

<Improvement for administrator>

1. Added validation slide selection in Instrument settings

Cell counting setting

Slide setting

☐ 1 Ch.
 ☐ 2 Ch.
 ☐ 3 Ch.
 ☐ 8 Ch.
 ☒ Reusable
 ☒ Validation

Counting chamber area

current

2. Added auto focus channel selection in Fluorescence mode in Instrument settings

Autofocusing channel in FL

☒ BF
 ☐ GF
 ☐ RF

Autofocused counting ☒ ON

Autofocus upon slide insertion ☒ ON

APPLY

3. Improved event log display speed
4. Request for DSS update when client version is higher than CW DSS

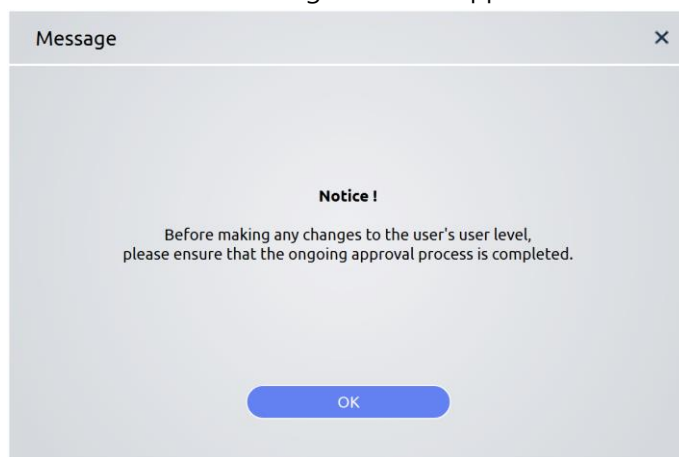
Message

Notice !

A software update in Data Storage is required.
Please update the software first.

OK

5. Notification for the change of user's approval level

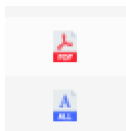


<Improvement for user>

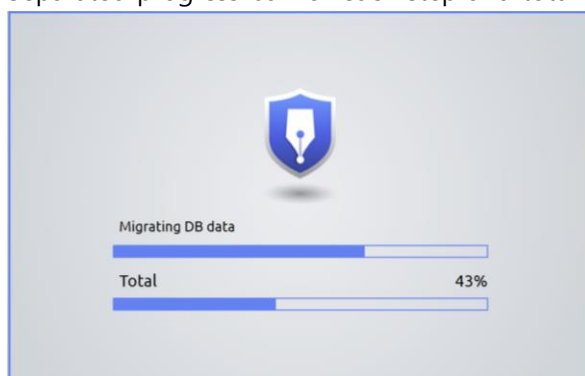
1. Reduced time taken to display report lists (25 items per page)
2. Changed it so that reports from the same group can be viewed regardless of approval authority or user grade
3. Added checkbox to selectively export multiple files
4. Improvements in filtering operation according to logged in user's level
5. Added function to delete raw images for saving storage space (pdf files cannot be deleted)



6. Added icon to indicate whether the report is saved as PDF ONLY or PDF ALL



7. Added multiple selection function for reports
8. Added function to verify that the entered password is not prohibited
9. Separated progress bar for each step and total progress in Update progress bar



10. When connecting LUNA-FX7 and CountWire by displaying the necessary IP address

LUNA-FX7

IP 192.168.0.107

PORT 22

<Improvement of storage server>

1. New faster RDBMS for data storage (MySQL)
2. Efficient data filtering using optimized DB queries
3. Improved metadata consistency (enforced by DB engine)
4. Performance optimizations for big data sets
5. Better data reliability with concurrent user/device sessions
6. Network security improvements
7. Lower network response latency due to reusable SSH sessions

<Fixing bugs>

1. Issue where deleting a protocol in CW does not delete it on the device
2. Apply button activation condition error on the first screen of System settings
3. Screen freezes when the end date of Event Log search is earlier than the start date
4. Issue where characters are cut off at the bottom of Modify account and Add group windows
5. Spelling error in the message box displayed when editing or deleting the default protocol
6. Bug where channel order is listed incorrectly when printing
7. Issue where some parts are missing during printing process
8. Disabled input of multilingual characters when entering ID and password
9. Issue where characters are cut off when displaying 100% bar in histogram
10. Issue where changing the user's level affects the existing signature status
11. Prevents entering the same user name or print name.

- End of Page -